

Switzerland Visitors' Guide



Transportation and Directions

# Geneva Airport



## Car Rental

Warning: If you rent a car in Switzerland but return it to the France sector, or vice versa your car rental company may charge you a fee.

### Swiss Sector

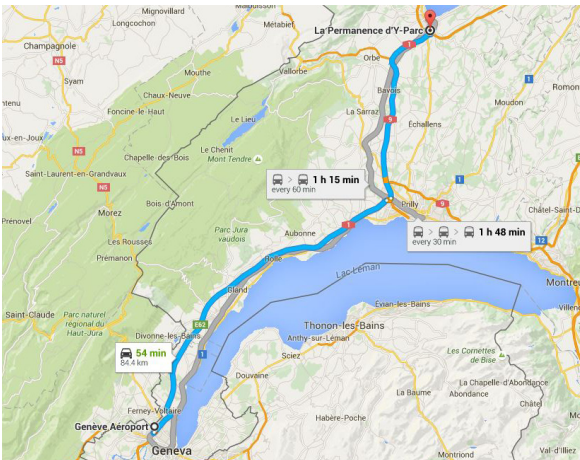
Avis	<a href="http://www.avis.ch">www.avis.ch</a>
Budget	<a href="http://www.budget.ch">www.budget.ch</a>
Europcar	<a href="http://www.europcar.ch">www.europcar.ch</a>
Hertz	<a href="http://www.hertz.ch">www.hertz.ch</a>
National Alamo	<a href="http://www.nationalcar.com">www.nationalcar.com</a>
Sixt	<a href="http://www.sixt.ch">www.sixt.ch</a>
Thrifty	<a href="http://www.thrifty.fr">www.thrifty.fr</a>

### French Sector

Avis France	<a href="http://www.avis.fr">www.avis.fr</a>
Budget	<a href="http://www.budget.fr">www.budget.fr</a>
Enterprise	<a href="http://www.enterprise.fr">www.enterprise.fr</a>
Europcar France	<a href="http://www.europcar.fr">www.europcar.fr</a>
Hertz France	<a href="http://www.hertz.fr">www.hertz.fr</a>
Sixt	<a href="http://www.sixt.fr">www.sixt.fr</a>

## Train Options

[www.sbb.ch](http://www.sbb.ch)



## Directions from Geneva Airport

Route de l'Aéroport 21, 1215 Le Grand-Saconnex  
About 84.4 km and 50 Minutes Depending on Traffic  
About 1 Hour by Train (10 Minutes from Yverdon  
Train Station to Heraeus by car/taxi)

Get on A1/E25/E62 from Route de Pré-Bois, 2 min (1.1 km)

1. Head south on Route de l'Aéroport, 140 m
2. Continue onto Route de Pré-Bois, 350 m
3. Keep left to stay on Route de Pré-Bois, 170 m
4. Slight left onto Route de la Vorge, 100 m
5. Use the left lane to merge onto A1/E25/E62 via the ramp to Lausanne/Gd-Saconnex/Ferney, 350 m

Follow A1/E25/E62 to Rue des Petits Champs in Yverdon-les-Bains. Take exit 25-Yverdon-Sud from A1, 47 min (82.4 km)

6. Merge onto A1/E25/E62 (Toll road), 53.2 km
7. Use the right 2 lanes to take the exit toward A1 (Toll road), 800 m
8. Continue onto A1 (Toll road), 28.2 km
9. Take exit 25-Yverdon-Sud toward Yverdon-Sud/Moudon/Thierrens, 250 m

Follow Rue des Petits Champs and Avenue des Trois-Lacs to Avenue des Sciences, 2 min (900 m)

10. At the roundabout, take the 3rd exit onto Rue des Petits Champs heading to Lausanne/Vallorbe/Neuchâtel, 300 m
11. At the roundabout, continue straight onto Avenue des Trois-Lacs, 240 m
12. At the roundabout, take the 1st exit onto Avenue des Sciences, 300 m
13. Turn left to stay on Avenue des Sciences
  - Destination will be on the right, 47 m

## Heraeus Medical Components

Y-Parc, Avenue des Sciences 2D  
1400 Yverdon-les-Bains

# Zürich Airport



## Car Rental

Located in the Airport Center, Open: 06:00 to 23:30

Alamo	+41 (58) 122 04 20
Avis	+41 (44) 800 77 33
Budget	+41 (44) 800 77 33
Flughafen Zürich: Return Car to Parking 3	
Dollar Thrifty	+41 (43) 816 32 55
Enterprise Rent-a-Car	+41 (58) 122 04 20
Europcar	+41 (43) 255 56 56
Hertz	+41 (43) 816 32 55
National	+41 (58) 122 04 20
Sixt	+41 (84) 888 44 44

## Directions from Zürich Airport

8058 Zürich-Flughafen, Switzerland

About 195 km and 2 Hours and 20 Minutes

About 2 Hours and 10 Minutes by Train (10 Minutes from Yverdon Train Station to Heraeus by car/taxi)

Get on A1/A4 in Rümlang from Butzenbuelring, Flughafenstrasse, 6 min (4.6 km)

1. Head west on Butzenbuelring, 20 m
2. Keep left to stay on Butzenbuelring, 350 m
3. Use the 2nd from the left lane to stay on Butzenbuelring, 300 m
4. Slight right toward Butzenbuelstrasse/Flughafenstrasse (signs for Rümlang/Glattbrugg), 65 m
5. Continue onto Butzenbuelstrasse/Flughafenstrasse
  - Continue to follow Flughafenstrasse
  - Go through 1 roundabout, 600 m
6. Continue onto Flughofstrasse, 1.5 km
7. Keep left to continue on Birchstrasse, 700 m
8. Use right lane to take ramp to Bern/Basel/Luzern

Follow A1 and E25 to Avenue des Trois-Lacs in Yverdon-les-Bains. Take exit 25-Yverdon-Sud from A1/E25, 1 h 52 min (190 km)

9. Merge onto A1/A4 (Toll road), 8.2 km

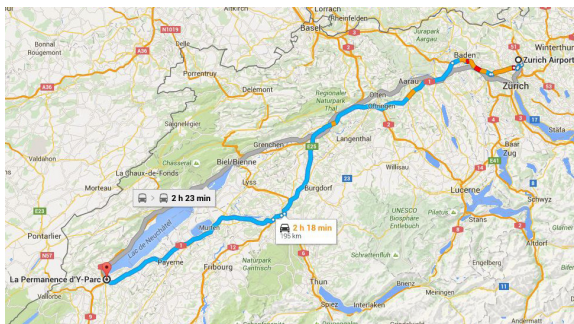
10. At the interchange 59-Limmattaler Kreuz, Use the right 2 lanes to follow signs for E60/A1/A3 toward Bern/Basel/Dietikon (Toll road), 500 m
11. Merge onto A1H (Toll road), 140 m
12. Continue onto A1 (Toll road), 15.6 km
13. Keep left to stay on A1, follow signs for Bern/Aarau/Mägenwil (Partial toll road), 91.1 km
14. At the interchange 37-Wankdorf, Use right 2 lanes to follow signs for E25/E27/A1 toward Lausanne/Fribourg/Neuchâtel/Bern-Neufeld (Toll road), 1.6 km
15. Continue onto A1/E25/E27 (Toll road), 3.4 km
16. Keep left to continue on A1/E25, follow signs for Lausanne/Yverdon/Neuchâtel/Bern-Bethlehem (Toll road), 68.9 km
17. Take exit 25-Yverdon-Sud toward Yverdon-Sud/Echallens/Thierrens, 290 m

Follow Avenue des Trois-Lacs, 1 min (650 m)

18. At the roundabout, take the 3rd exit onto Avenue des Trois-Lacs, 260 m
19. At the roundabout, take the 1st exit onto Avenue des Sciences, 300 m
20. Turn left to stay on Avenue des Sciences
  - Destination will be on the right, 47 m

## Heraeus Medical Components

Y-Parc, Avenue des Sciences 2D  
1400 Yverdon-les-Bains

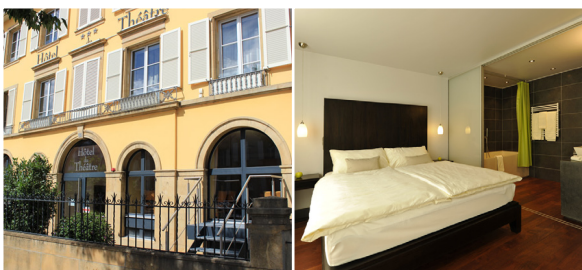


Switzerland Visitors' Guide



Hotel Options

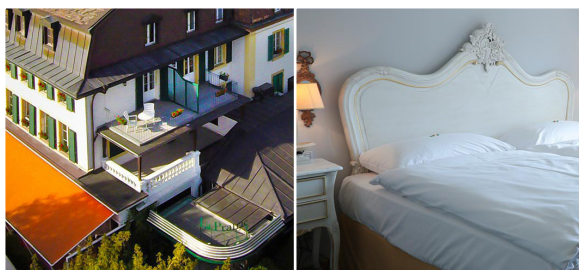
# Hotel Options in Switzerland



## Hôtel du Théâtre

*Located at Yverdon Main Train Station  
Distance from Heraeus: 10 Minutes by Car*

Avenue Haldimand 5  
1400 Yverdon-les-Bains  
+41 (24) 424 60 00  
HotelYverdon.ch



## Hôtel de la Prairie

*Distance from Heraeus: 10 Minutes  
by Foot / 5 Minutes by Car*

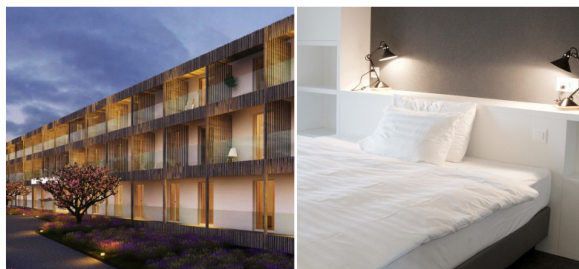
Avenue des Bains 9  
1400 Yverdon-les-Bains  
+41 (24) 423 31 31  
LaPrairieHotel.ch



## Grand Hôtel & Centre Thermal Yverdon-les-Bains

*Distance from Heraeus: 10 Minutes  
by Foot / 5 Minutes by Car*

Avenue des Bains 22  
1400 Yverdon-les-Bains  
+41 (24) 424 64 64  
BainsYverdon.ch



## Hôtel de la Source

*Distance from Heraeus: 10 Minutes  
by Foot / 5 Minutes by Car*

Avenue des Bains 21  
1400 Yverdon-les-Bains  
+41 (24) 524 14 44  
HoteldelaSource.ch